



YOU GIVE IT.
WE GROW IT.

FOR LANCASTER.
FOREVER.

**ONE YEAR
TO CHANGE
THE NEXT 100**



LANCASTER COUNTY
COMMUNITY
FOUNDATION

PRESENTS

SUMMER FOR LANCASTER

IN PARTNERSHIP WITH



THE STEINMAN
INSTITUTE

TAIT



ELEMENTS BEING DESIGNED

- ART INSTALLATION- COMMUNITY PIECE THAT LIVES ALL SUMMER/ AND SOME ELEMENT FOR EVER IN EWELL AND BINNS PARK
- STAGE- ELEVATE THE CURRENT STAGE IN BINNS PARK. HAS A EVERYDAY LOOK AND AN ACTIVATED LOOK

KEY DATES

- MARCH 13TH-ANNOUNCEMENT DATE (DOES NOT NEED TO ANNOUNCE ELEMENTS)
 - MAY 3RD- START DATE OF "SUMMER IN LANCASTER"
 - AUGUST 16TH (23RD RAIN DATE)- CELEBRATE - GRAND EVENT
- SPACE WILL WANT TO BE ACTIVATED AT DIFFERENT TIMES THROUGH OUT THE SUMMER BUT WANTS TO HAVE A PRESENCE THROUGH OUT THE ENTIRE SPAN OF THE SUMMER



STAGE AND SPACE DESIGN INSPIRATION

NOTE ALL DRAWINGS AND RENDERINGS ARE PROTECTED BY US COPYRIGHT LAWS AND ARE THE PROPERTY OF ATOMIC DESIGN, INC. ALL ILLUSTRATED LIGHTING AND RIGGING IS FOR SUGGESTION ONLY. DISCUSS AND CONFIRM WITH PRODUCTION TEAM AND VENUE.

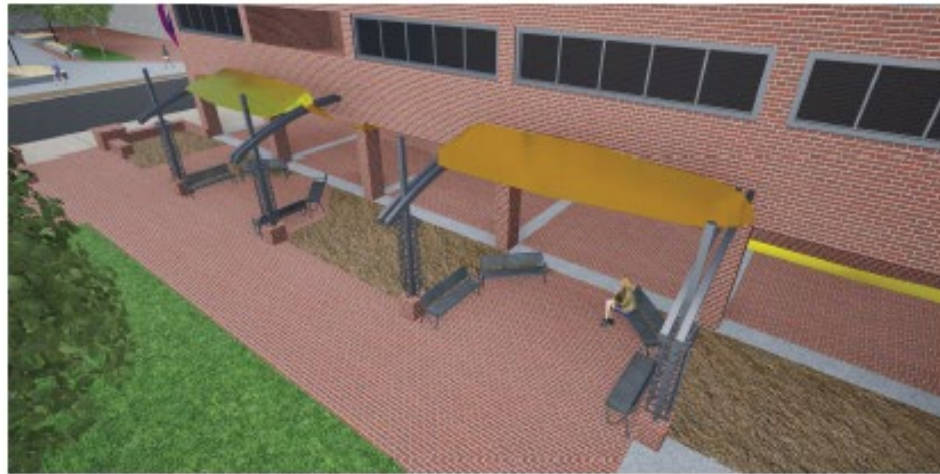
ATOMIC

05
© 2023



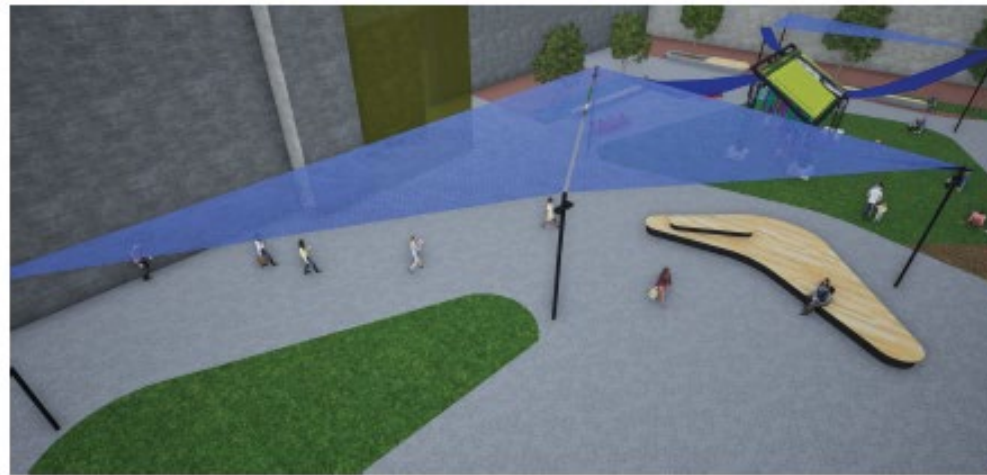
RIBBONS

- HAVING RIBBONS SPAN THROUGH OUT THE SPACE TO GUIDE THE COMMUNITY THROUGH OUT THE SPACE AS WELL AS TO BE INTERACTED WITH
- PIECES ON THE TOP PART OF THE STAGE WILL BE MADE OF A STRONGER MATERIAL SUCH AS SHEET METAL TO HELP HOLD SHAPE
- ON THE SOUTH SIDE OF THE PARK USING THE TOWERS SPAN LARGER RUNS OF RIBBONS TO CREATE SOME SHADE



STAGE ELEVATION-RIBBONS OFF THE STAGE

NOTE ALL DRAWINGS AND RENDERINGS ARE PROTECTED BY US COPYRIGHT LAWS AND ARE THE PROPERTY OF ATOMIC DESIGN, INC. ALL ILLUSTRATED LIGHTING AND RIGGING IS FOR SUGGESTION ONLY. DISCUSS AND CONFIRM WITH PRODUCTION TEAM AND VENUE.



PERGOLA

- USING ONE OF THE PERGOLAS THAT WAS BUILT FOR “EXTRA GIVE 23”
- HAVING IT SIT AT AN ANGLE SO BANNERS CAN BE USED ON THE TOP AND CHANGED OUT THROUGH OUT THE SUMMER
- HANGING STREAMERS ON THE UNDERNEATH FOR THE COMMUNITY TO INTERACT WITH
- OUTSIDE OF THE PERGOLA SPANNING SAILS ACROSS SOME OF THE LAMP POSTS IN THE SPACE TO CREATE SHADE SPOTS

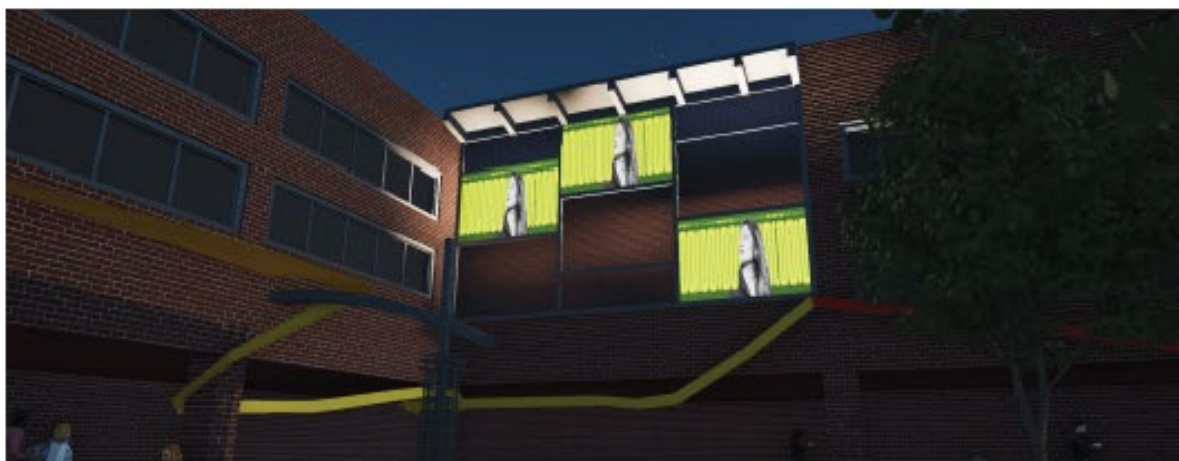


ARTISAN MARKET ENTRANCES

- ONE BANNER ON THE TOP OF CORNER OF THE BUILDING THAT IS NEXT TO BINNS PARK. WILL NEED TO HAVE THE RIBBONS GO AROUND THE WINDOW ON THE BUILDING
- OTHER BANNER ON THE CORNER OF THE BUILDING ON
- HAVING THE RIBBONS CONNECT INTO EACH BANNER AND THEN FLOW INTO THE UNDERNEATH TO HELP NATURALLY GUIDE THE COMMUNITY TO THE UNDERNEATH

ENTRANCES TO ARTISAN MARKET

NOTE ALL DRAWINGS AND RENDERINGS ARE PROTECTED BY US COPYRIGHT LAWS AND ARE THE PROPERTY OF ATOMIC DESIGN, INC. ALL ILLUSTRATED LIGHTING AND RIGGING IS FOR SUGGESTION ONLY. DISCUSS AND CONFIRM WITH PRODUCTION TEAM AND VENUE.



OBSERVATORY BANNERS

- USING SEMI TRANSLUCENT BANNERS THAT CAN BE CHANGED OUT THROUGH OUT THE SUMMER
- DURING THE DAY SOLID AND EASILY READ AND AT NIGHT CAN STILL BE SEEN AND WILL CATCH PEOPLES EYE

GLASS OBSERVATORY BANNERS

NOTE ALL DRAWINGS AND RENDERINGS ARE PROTECTED BY US COPYRIGHT LAW SA, AND ARE THE PROPERTY OF ATOMIC DESIGN, INC. ALL ILLUSTRATED LIGHTING AND BIGGING IS FOR SUGGESTION ONLY. DISCUSS AND CONFIRM WITH PRODUCTION TEAM AND VENUE.

ATOMIC

020
© 2023



LANCASTER COUNTY
COMMUNITY
FOUNDATION

PRESENTS

SUMMER FOR LANCASTER

IN PARTNERSHIP WITH



THE STEINMAN
INSTITUTE

TAIT



**ONE YEAR
TO CHANGE**

THE NEXT 100



LANCASTER COUNTY
COMMUNITY
FOUNDATION

CHANGETHENEXT100.ORG